

**Nokia Customer Care
2118 (RH-77)
Mobile Terminal**

Disassembly/Assembly

Table of Contents	Page
Safety Information	3
ESD Protection	3
Assembly Instructions	4
Disassembly Instructions.....	4
1. Remove the B-cover	4
2. Remove the A-cover and Keymat	4
3. Remove the Screws	5
4. Remove the PWB Module	6
5. Remove the UI Display	6
6. Remove the RUIM Label	6
7. Remove the PWB Shied	7
8. Remove the PIFA Antenna	7
9. Remove the DC Jack, Vibra, and Microphone	8

Safety Information

Adhere to the following guidelines when assembling and disassembling the mobile terminal.

- **QUALIFIED SERVICE**
Only qualified personnel may install or repair mobile terminal equipment.
- **ACCESSORIES AND BATTERIES**
Use only approved accessories and batteries. Do not connect incompatible products.
- **CONNECTING TO OTHER DEVICES**
When connecting to any other device, read its user's guide for detailed safety instructions. Do not connect incompatible products.

ESD Protection

Nokia requires that mobile terminal repair centers have sufficient ESD protection against static electricity when servicing mobile terminals. Use the following guidelines:



- A mobile terminal that is ready for use can be handled normally without ESD protection. The battery can be replaced in normal conditions of use.
- Use ESD protection when replacing a color cover, except for the mobile terminal covers which can be replaced by the customer.
- All electronic parts of the mobile terminal, including the display, are susceptible to ESD. Resistors also can be damaged by static electricity discharge.
- All ESD-sensitive parts must be packed in metallized protective bags during shipping and handling outside any ESD Protected Area (EPA).
- Every repair action involving opening the mobile terminal or handling the mobile terminal components must be done under ESD protection.
- ESD-protected spare part packages **MUST NOT** be opened/closed outside an EPA.

For more detailed information about ESD protection and EPAs, contact your local Nokia Customer Care representative.

Assembly Instructions

To assemble the mobile terminal, follow the "[Disassembly Instructions](#)" in reverse order.

Disassembly Instructions

Use the following instructions to disassemble the mobile terminal.

1. Remove the B-cover

Press the release button, and slide the B-cover downward.



2. Remove the A-cover and Keymat

A. Use a screwdriver or SRT-6 to unhook the A-cover clasps from the bottom of the C-cover.

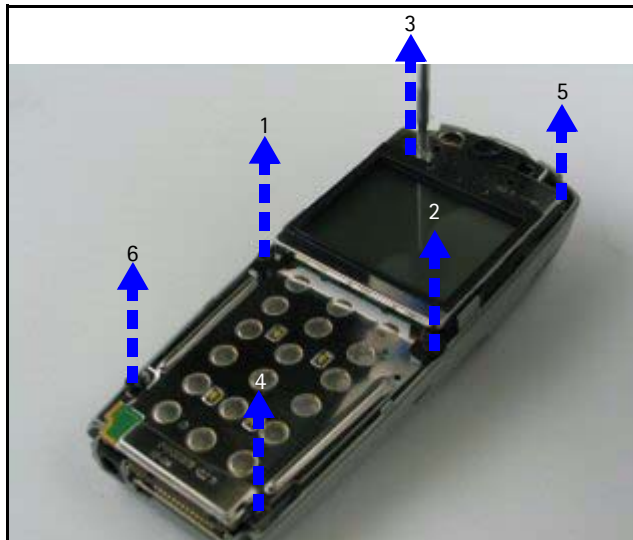


B. Unhook the clasp on the side of the assembly to release the A-cover and keymat.



3. Remove the Screws

Use a screwdriver to remove the six screws from the C-cover assembly.



Note: During assembly, use the reverse order and use a Torx T6 PLUS with a torque of 20 Ncm.

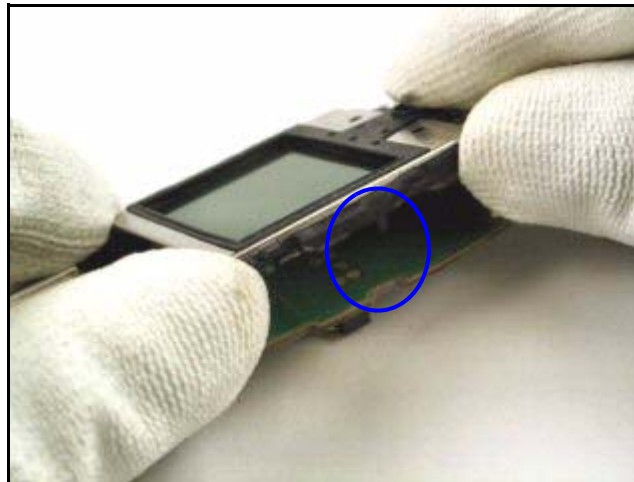
4. Remove the PWB Module

Apply outward pressure on the C-cover, and remove the PWB module from the C-cover assembly.



5. Remove the UI Display

Carefully unlatch the UI module clasp, and separate the UI display from the BB module.



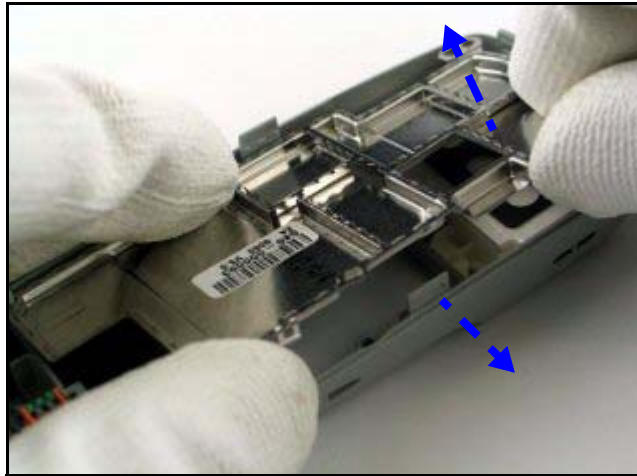
6. Remove the RUIM Label

Unattach the RUIM label from the C-cover assembly.



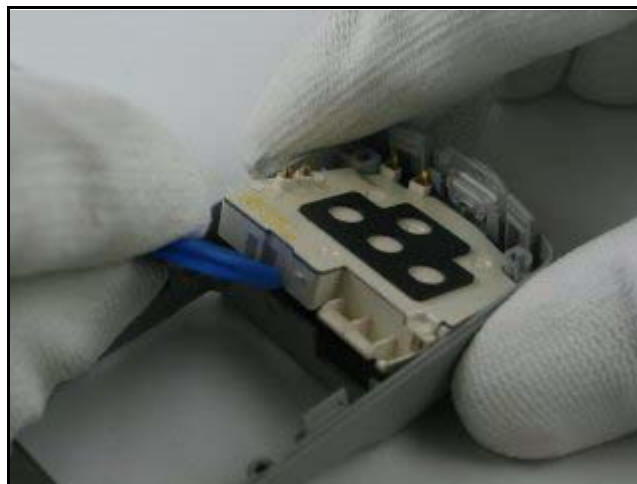
7. Remove the PWB Shied

Apply outward pressure to the side of the C-cover while pushing up on the PWB shield to remove it from the assembly.



8. Remove the PIFA Antenna

Wedge the SRT-6 between the C-cover and the PIFA antenna, and apply upward pressure to remove it.



9. Remove the DC Jack, Vibra, and Microphone

